

This first half term has flown by! Our community has achieved so much in these first weeks of this school year. All our children have taken up the challenges of their new classes and settled back to learning. Thank you for the ways in which you have supported your children and our school community.



Thank you to all our staff and teachers for setting up inspiring learning environments, ethos and culture, for establishing familiar routines and encouraging enthusiasm around the study work themes for the Autumn term.

In half a term, our community have achieved so many different things. The newsfeed on our school website, Facebook and Twitter shows just how much happens across school, it gives a real insight into our school and provides a great prompt for asking your child about their learning. www.wybunburydelves.co.uk

School is very settled, the children are a real credit in how they adapt and respond and enjoy school.



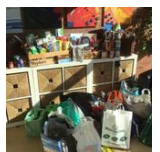
Covid Update: We currently have no confirmed cases within the school community but there are cases in the wider school community. Please continue to be vigilant for symptoms and book a PCR for symptoms. LFD testing is for regular asymptomatic testing only, the government are asking school staff and parents to continue with this over half term. If you do have a positive case over half term, please let us know as soon as you know via the office@wybunburydelves.co.uk email address and should we need to contact you following any disclosure, we will do this by email or telephone. Please don't expect an instant response but we will check for COVID related emails throughout half term. It is inevitable that as we head into winter we will continue to experience COVID in our community. School adapts and responds to the latest guidance and changes as we need to. We thank each and every one of you for playing your part in keeping us all as safe as we can by sticking to the Government guidance, the latest CE Public Health Advice and school routines.



Parent events in school: It has been lovely to begin to invite parents back into school for some events. We are still working on covid restrictions so these events are strictly limited in the numbers of parents/carers who can attend and we ask that everyone follows the covid rules of the event, e.g. mask wearing, LFD testing before the event.

Staffing: We have welcomed Miss Greatbanks to our team this half term, she is working within the Year 1 team. We hope she has enjoyed her first half term! Miss Alex will be leaving us on Friday 5th November, she will be starting a new job as a Police Communications Operator, we wish her all the very best in her new job!

Harvest: *'Give thanks to the Lord for he is good; his Love endures forever' 1 Chronicles 16: 34* This year our Year 1 and Year 2 led our Harvest worship and celebrations. Reception shared a lovely video explaining about the Food Bank and the local need. A huge thank you for your kind donations of items they are currently short of.



Class Worship: It was lovely to welcome our families back into school on Friday for our first class worship since early 2020!

Year 3 did a wonderful job! They clearly told us about how we need to 'Sea the Damage' and think about how we reduce, reuse and recycle our plastics. We look forward to seeing how you continue to lead our community in making a difference. Year 6 are excited to be sharing this afternoon with their families.

Our class worships across this term are highlighting a cause which each class will become champions for this year — it is about making a difference to our school, our community and the wider world. We look forward to welcoming parents/carers of our other classes across the rest of the term. Please ensure you have booked to be able to attend. *'Be who God meant you to be and set the world on fire.'* St. Catherine of Siena

Christmas Worships and Nativities: Due to the need to limit the numbers of additional adults in school, or at church, because of Covid restrictions and risk assessments, we will be celebrating Christmas once again in a virtual way.

Preschool and Reception will record their Nativities and share with families via the Tapestry accounts.

Year 3 and Year 4 will lead our whole school Christmas service, this will be emailed out as a link.

We are hoping then to offer an outdoor lessons and carols event for parents/carers lead by Year 5 and Year 6 - details will follow.

We are working with the Wybunbury Tower Trust to find a way and a date for Carols Around the Tower to return hopefully - watch this space!

Year 1 and Year 2 have led our Harvest celebrations.

Year 5 and Year 6 will lead our Easter celebrations

Preschool pumpkin week: There has been lots of pumpkin fun in Preschool this week.



Colour Run: We all thoroughly enjoyed the Colour Run. It was a fantastic afternoon and we are overwhelmed by the sponsorship amount raised - £3940.90!! Absolutely incredible! We are blown away by your support. Thank you all so much! A huge thank you to everyone who sponsored the children, the PTA for organising the event and all the volunteers on the day!



PTA – they are doing a brilliant job at supporting our school and coming up with great ideas to engage our community and raise our school some money. A huge thank you to the PTA officers, committee and the volunteers who support. They are always looking for volunteers to help with events! The bake sale yesterday was another huge success. We are very much looking forward to the Christmas Fair. You can keep up to date with all they are doing by following their Facebook page: <https://www.facebook.com/wybunburydelvespta/>

Reception Place 2022 Applications: The deadline for applications for Reception 2022 is January 15th. We have set up a new page on our website: <https://www.wybunburydelves.co.uk/our-school/joining-our-wybunbury-delves-family.html> with information and links to our YouTube channel for a virtual tour. We have 2 open events after half term on Wednesday 10th November and Saturday 13th November for families new to school to book in and have a look around. We are blessed with a beautiful school and grounds, if you know of families with children due to start school, please encourage them to visit!



Website: We are in the process of updating our website and hope to launch the new site after half term.



Parent Evening: This will take place in the week beginning Monday 29th November. Details of how to book a telephone consultation with your child's teacher will follow next half term.

Our Learning: At the beginning of each term our teachers send the curriculum overview for the term (holistic plan) and a newsletter. This shows the areas of the curriculum being covered for that term. Each week the Teachers provide a news update about the learning in class and the activities for the week – these appear on our website, Facebook and Twitter feeds. We have been busy updating the curriculum area of our website : <https://www.wybunburydelves.co.uk/our-learning.html> It includes long term plans and details about individual subjects.



Wider Personal Development: There are many activities across the week/term which develop your child beyond their academic achievements. Mindful Monday is about paying more attention to the present moment – to your own thoughts and feelings, the world around you. Some people call mindfulness, 'awareness'. Its aim is to understand ourselves better. PHSE worship and activities develop Personal, Health and Social awareness; how we live well together to be respectful, develop positive relationships, stay safe and healthy. Visitors such as PC Nick and the Fire Service regularly visit school to develop importance messages such as Stranger Danger and Fire Safety. Our children across school have roles and responsibilities, e.g. cloakroom monitor; fundraiser; friendship squad which help our children to have responsibility, team work and leadership. Through Christian Values we look at what it is to be a good person – to be kind; gentle; show forgiveness; demonstrate self-control, joy, goodness, peace and LOVE.



Forest School: We have been lucky again this year to be able to secure a booking with Mr Hadfield, Head into the Wild, to provide Forest School within curriculum time. Our Y1 to Y6 children will have half a day a week for half a term up to Spring half term. This half term Y3 and Y4 have thoroughly enjoyed the experience, Y1 and Y2 will be next half term, then Y5 and Y6 after Christmas.

Free School Meals / Pupil Premium: If you qualify for Free School Meals (FSM), regardless of whether you are in Reception, KS1 or KS2, there are benefits to be had both to yourselves and to school. Even if you find yourselves in a temporary situation of low income and at that point meet the Free School Meal criteria, school receives Pupil Premium for the period of receiving FSM and for 6 years afterwards. It is completely confidential if you do qualify. School can use Pupil Premium towards visits/visitors/part payment towards residential visits. It is only available to those who qualify. Pupil Premium is used in school to further resources and staffing, it cannot be used to subsidise OOSC or holiday club. Cheshire East website has further information of this very simple process of applying for FSM.



Income related free school meals (IRFSM)

You can claim free school meals for each child who attends school in Cheshire East if you receive one of these benefits:

- Universal Credit with no earned income or with net monthly earnings less than £616.67
- Income Support
- Income based Jobseeker's Allowance
- Income related Employment Support Allowance
- Support under Part VI of the Immigration and Asylum Act 1999
- The guaranteed element of State Pension Credit
- Child Tax Credit - as long as you have a yearly household income of less than £16,190 (as assessed by HM Revenue and Customs) and do not get Working Tax Credit
- Working Tax Credit run-on (paid for 4 weeks after you stop qualifying for Working Tax Credit)

We suggest you do make a claim for free school meals even if your child is in key stage 1 as the school can claim additional funding (pupil premium) for new equipment and resources.

You can apply for nursery-age children if they attend before and after lunch sessions at a local authority nursery school, nursery class or an Academy nursery if it has the same Ofsted number as the primary school – this includes us at Wybunbury Delves.

Phone 0300 123 5012 for further information and help.

Attendance: It is expected that your child is in school every day and our attendance target is 97%. Well done to all of you who have managed 100% attendance this half term!

Reception 95% **Year 1** 90% **Year 2** 95% **Year 3** 96% **Year 4** 96%
Year 5 91% **Year 6** 97%

Well done to **Year 6** who are our **top attenders this half term!**



If your child is absent due to a positive covid test then they are recorded in the register as ill, with a Covid subcode.

Whilst we appreciate the pandemic has the potential to increase absences, due to cases, awaiting results or following the current PHE advice for CE household children contacts, all children are expected to attend school for the whole school day.

We ask that medical appointments are, as far as possible, made outside of school hours. If they cannot be arranged at this time, please provide school with a copy of the medical appointment letter for our records. If you take a sibling out of school to attend their brother/sister's appointment, this is an unauthorised absence as the appointment does not relate to them and should only happen if you genuinely have no alternative. Sometimes when your child is ill it is difficult to decide whether or not to send your child into school, especially in the current times, the NHS have produced this useful guide: <https://www.nhs.uk/live-well/healthy-body/is-my-child-too-ill-for-school/?tabname=self-help-tips>

Fixed Penalty Notices apply to all types of unauthorised absence, not just those accrued through holidays in term time. Holidays within term time cannot be authorised by school.

If 10 or more unauthorised absences (1 absence = ½ day) are accrued over two consecutive terms then school will consult the LA on the issuing of a Fixed Penalty Notice. The cost of which is £60 per parent per child if paid within 21 days increasing to £120 per parent per child to be paid within 28 days if remains unpaid will be processed to Court for prosecution. These Fixed Penalty Notices have been introduced as part of the government's drive to improve attendance. Please see our attendance policy on the website.

Please do not phone your child in as ill if you have gone away on holiday or out for the day - the children do tell us where they have been or are going to go! If this happens we will record the absence as unauthorised holiday.

OOSC Have been enjoying their temporary home in the hall and has settled into its new routines! You are able to book sessions via emailing Clare: oosc@wybunburydelves.co.uk Earlier this month we notified everyone of a few changes to our booking terms and conditions.

- Permanent Bookings – 1 week notice to cancel the permanent booking.
- Ad-hoc bookings can be made, once the booking is confirmed you will be charged for the session, it is not transferrable. The Ad-hoc booking will only be confirmed if there is space within OOSC
- Emergency OOSC booking for After School Club day on the day (if space available) will be charged at £10 whether the child stays till 4.30pm or 6pm
- All bookings and queries about OOSC, should be directed to Clare at the usual email address of oosc@wybunburydelves.co.uk
- All other T and Cs remain the same



Operation Christmas Child Shoe Box Appeal Our shoe boxes are starting to come in! A big thank you to all of you who have returned shoe boxes already, it is much appreciated. If you are wanting to send one but have yet to return your box, please be aware that the deadline for returned boxes will be **Monday 15th November 2021**. Further details are on our Website newsfeed. We have boxes available at the office for 50p

Car parking. We have had several grumbles and complaints about the parking at school, both on the road and on the car park this week. Please park responsibly and use the car park – both parts (the original and the extension)! Please do not queue down the middle waiting for the extension to open – this should not happen if everyone arrives within their time slots! Whilst part of the road has no road markings, parking here is dangerous for our children and other road users – please use the car park. We take no responsibility for damage and accidents on our carpark. If you do damage another car, please leave your details.

Easyfundraising. As the name suggests, this is easy to do! It costs you no additional money, but it does mean your online purchases can generate cash for school. Thank you to those of you who have been totting up the donations over time for us! Over 4,300 shops and sites will donate to us when you use easyfundraising to shop with them – at no extra cost to yourself! These donations really mount up and make a BIG difference to us, so we'd really appreciate it if you could take a moment to sign up and support us. It's completely FREE and only takes a moment. You can find our easyfundraising page at https://www.easyfundraising.org.uk/causes/wyburnburydelves/?utm_campaign=raise-more&utm_content=gs-e1

Amazon Wish List: We are regularly asked by parents, carers, grandparents and friends of the school as to how you can support us to continue to provide a rich, wide-ranging curriculum and a high standard of education. As you know we LOVE books! But we are always looking for exciting new titles and books which will spark our children to a love of reading and the wider curriculum. If you would like to, and are able to, support the school, please visit one of our wish lists below. Books will then be delivered straight to school and will be enjoyed as part of our lessons.

There are 2 lists, one for books for our younger children – Early Years (Preschool and Reception) and Key Stage 1 (Y1 and Y2); then for our older children in Key Stage 2 (Y3-Y6).

EY/KS1 List <https://amzn.eu/ds0huLX>

KS2 List <https://amzn.eu/0wCal1s>

If you, or any of your friends and family, would like to donate a book to school, please use the links above to our wishlist titles and add them to your Amazon order!

Term Dates for 2021-2022

Holiday Period	Date of Closing	Date of Re-Opening
Summer 2021	Tuesday 20th July 2021	Thursday 2nd September 2021
Autumn Half Term	Friday 22nd October 2021	Monday 1st November 2021
Christmas 2021/2022	Friday 17th December 2021	Wednesday 5th January 2022
Spring Half Term 2022	Thursday 17th February 2022	Monday 28th February 2022
Easter 2022	Friday 1st April 2022	Tuesday 19th April 2022
May Day 2022	Friday 29th April	Tuesday 3rd May 2022
Summer Half Term 2022	Friday 27th May 2022	Monday 6th June 2022
Summer 2022	Tuesday 19th July 2022	

INSET DAYS (Included above):

- Wednesday 1st September
- Tuesday 4th January
- Friday 18th February
- Wednesday 20th July
- Thursday 21st July

Please have a well-earned rest over half term and enjoy the family time together.

I would like to thank the whole school community, staff, children, governors, CDAT, parents, carers and families for their support this half term, Wyburnbury Delves is an amazing community!

Enjoy half term! Mrs Chesters and the Wyburnbury Delves Team