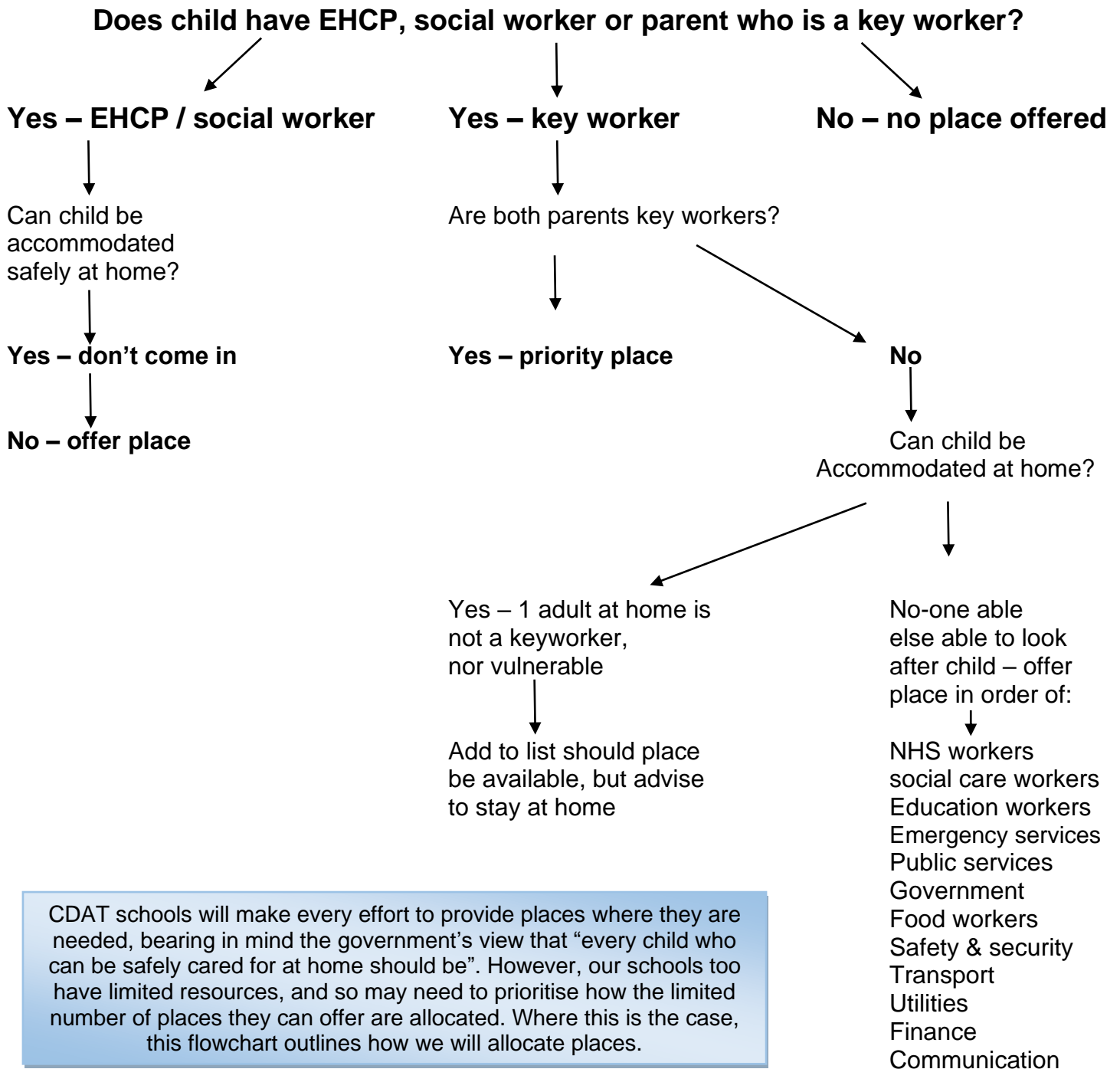


Flow chart for allocating key worker & vulnerable places



CDAT schools will make every effort to provide places where they are needed, bearing in mind the government's view that "every child who can be safely cared for at home should be". However, our schools too have limited resources, and so may need to prioritise how the limited number of places they can offer are allocated. Where this is the case, this flowchart outlines how we will allocate places.